



- **Mission:** To promote multidisciplinary investigation in the biomedical sciences through conferences, webinars, publication of a peer-reviewed journal, *Experimental Biology and Medicine (EBM)*, and to foster the career development of students, physician-scientists and new investigators.
- **Membership:** ~1,600
- **SEBM and EBM both established in 1903; FASEB Member since 2016**
- **Up to 2019: Annual meetings at Experimental Biology; International EBM Conference**
- <https://www.sebm.org/home>

2020-2021: VIRTUAL EVENTS

SEBM PRESENTS

CAREER DEVELOPMENT



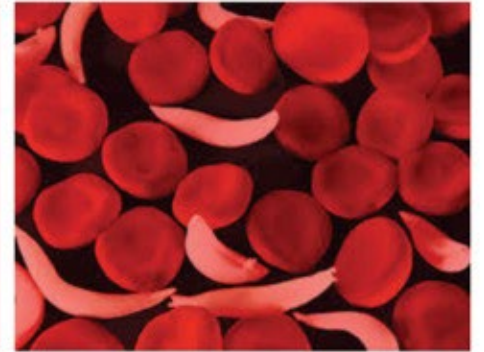
Join Lique Coolen, Kent State University as she shares her expertise.
"Career pathways for PhDs in biomedical sciences"

A MUST-ATTEND EVENT for TRAINEES

TUESDAY FEBRUARY 23
1:30 PM EASTERN | 1 HOUR



SEBM/EBM WEBINARS



SICKLE CELL SERIES



March 2, 1:30PM (ET) Sickle Cell Disease: Curative Therapy
Lakshmanan Krishnamurti, Emory University



Julie Kanter, Director Adult Sickle Cell Program, University of Alabama Birmingham
Gene Therapy for Sickle Cell Disease (Fact or Fiction)



March 16, 1:30PM (ET) Sickle Cell Disease Research
Jane Hankins, St. Jude Children's Research Center
Mobile health for patients with sickle cell disease to improve medication adherence



Kenneth Ataga, UTHSC Center for Sickle Cell Disease
The glomerulopathy of sickle cell disease



March 23, 1:30PM (ET) Pathophysiological Mechanisms in Sickle Cell Disease



Guillaume Lettre, University of Montreal
Using Mendelian randomization to study clinical heterogeneity in sickle cell disease

John D. Belcher, University of Minnesota
The role of heme and TLR4/MD-2 in sickle cell disease pathophysiology.

REGISTER AT WWW.SEBM.ORG



IEBMC

INTERNATIONAL EXPERIMENTAL BIOLOGY & MEDICINE CONFERENCE



REGENERATIVE MEDICINE

5 PLENARY SESSIONS FEATURING WORLD LEADERS IN REGENERATIVE MEDICINE

KEYNOTE SPEAKER



Arnold I. Caplan, PhD
Case Western Reserve University

ORGANS ON A CHIP



John P. Wikswo, PhD
Vanderbilt University



Megan McCain, PhD
University of Southern California



Yoko Ambrosini, PhD
Washington State University



Peter Loskill, PhD
Fraunhofer Institute for Interfacial Engineering and Biotechnology IGB

REGENERATIVE MEDICINE AND THE NERVOUS SYSTEM



Agnes Luo, PhD
University of Cincinnati



Guoli Ming, MD, PhD
University of Pennsylvania



Cindi P. Morshead, PhD
University of Toronto

STEM CELL BIOLOGY



Jian Feng, PhD
State University of New York at Buffalo



Daniel Garry, MD, PhD
University of Minnesota



Hannele Ruohola-Baker
University of Washington



Shannon McKinney-Freeman, PhD
St. Jude Children's Research Hospital

REGENERATIVE MEDICINE AND THE CARDIOVASCULAR SYSTEM



Robert J. Schwartz, PhD
University of Houston



W. Keith Jones
Loyola University Chicago

CLOSING SPEAKER



Kyung Sung
FDA Office of Tissues and Advanced Therapies, Division of Cellular and Gene Therapies

ORGANOIDS



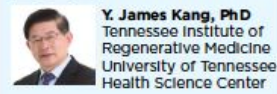
Antonio Santos, PhD
Stanford University



Munemasa Mori, MD, PhD
Columbia University



Gábor Tigyi, MD, PhD, DSc
Tennessee Institute of Regenerative Medicine
University of Tennessee Health Science Center



Y. James Kang, PhD
Tennessee Institute of Regenerative Medicine
University of Tennessee Health Science Center



For more info, visit iebm.org, or scan the barcode

The 2022 IEBMC is proudly sponsored by:



Medtronic



TennIRM

TENNESSEE INSTITUTE OF REGENERATIVE MEDICINE



2022: RETURN TO IN-PERSON

IEBMC 2022 - BRAZIL - Participate!



IEBMC

INTERNATIONAL EXPERIMENTAL BIOLOGY & MEDICINE CONFERENCE

Presentation ▾

Schedule ▾

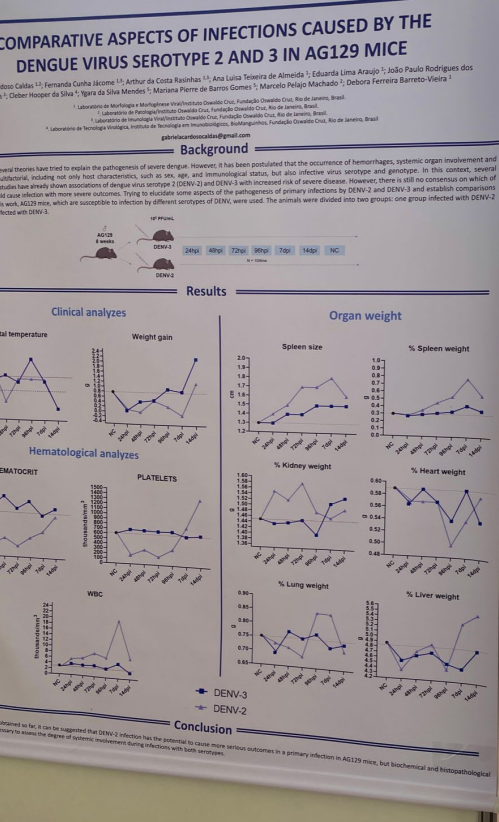
Register ▾

Abstracts



International Experimental Biology & Medicine Conference

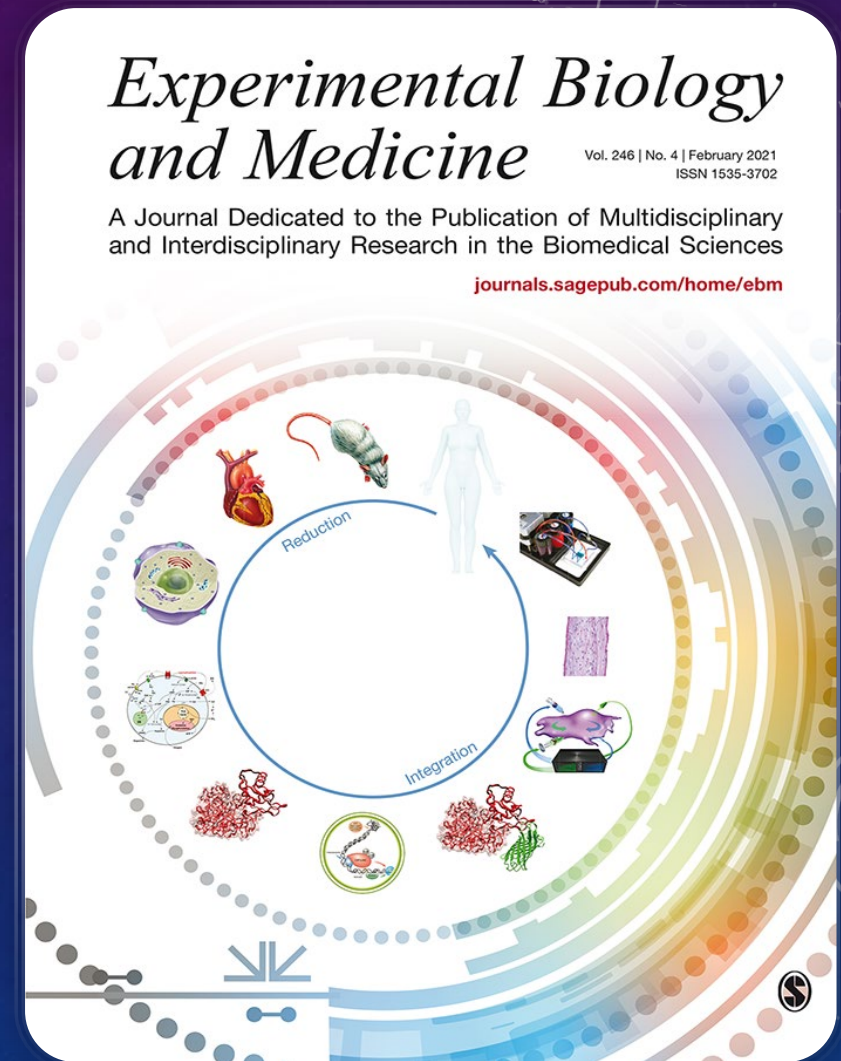
INFECTIOUS DISEASES



IEBMC 2022: JOINT MEETING WITH BRAZILIAN SOCIETY OF VIROLOGY

EXPERIMENTAL BIOLOGY & MEDICINE

- **5-Year Impact Factor 4.561**
- 22 Scientific Categories at the Crossroads of Experimental Biology and Medicine
- Global Journal with Offices on Five Continents and Editors in Taiwan, Great Britain, Brazil and Ghana; Editorial Board with 20 Associate Editors.
- >1200 submissions in 2021; acceptance rate 25%
- Publisher transition in 2023 from SAGE to Frontiers





- **Challenges:**
 - 2024 U.S. meeting to replace EB: Hybrid? Regional?
 - Increasing membership, including trainees
 - Balancing global vs regional priorities
- **How can FASEB help?**
 - Best practices/technology for meetings and conferences
 - Regular and trainee member engagement
 - Collaboration with other societies