

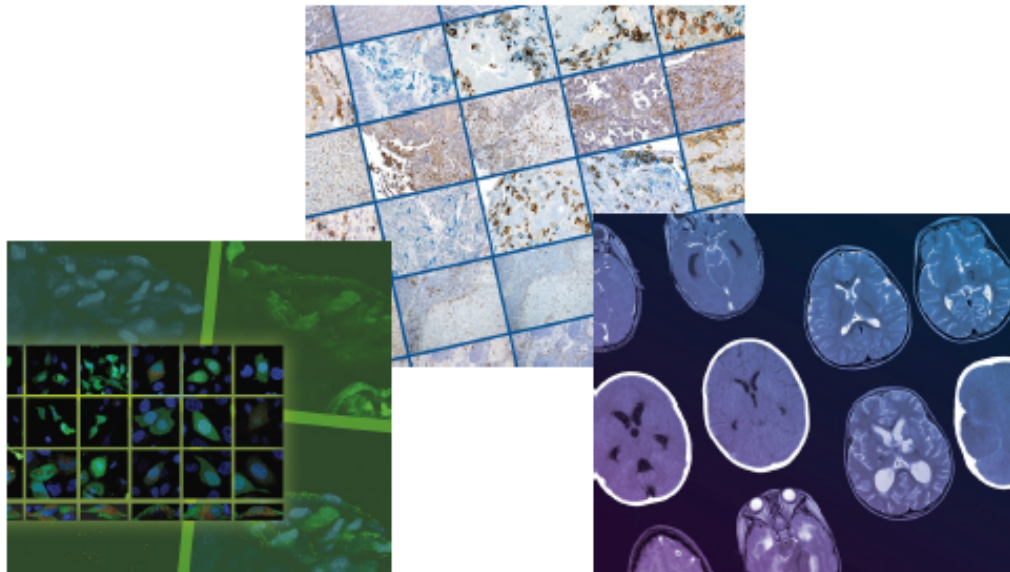
**Mission:** *SLB is a diverse community of researchers and clinicians offering member's career support while enhancing the advancement of immunological research.*

[www.leukocytebiology.org](http://www.leukocytebiology.org)

**Membership: 1,100**  
**FASEB member since 2019**

**Benefits:**

- Extensive and generous award program recognizing members at all career levels.
- Publish in a well-respected society journal.
- Opportunities to host your own special interest group sessions.
- Presentation opportunities at conferences around the globe.
- Supportive network of like-minded researchers and clinicians.
- Unique small community feel with big society resources.
- Low membership dues and waivers available



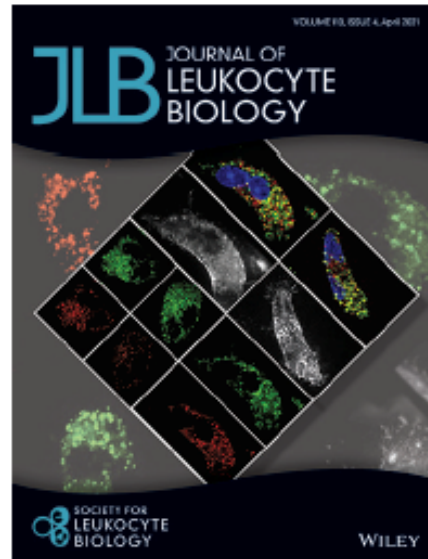
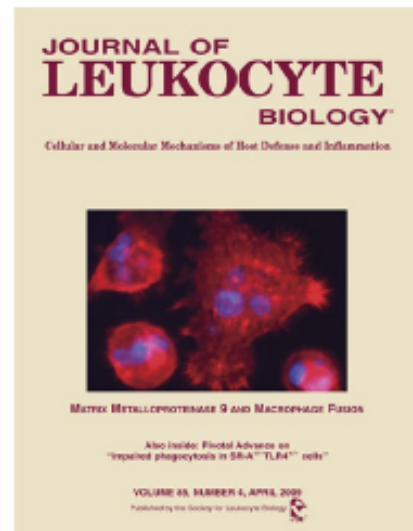
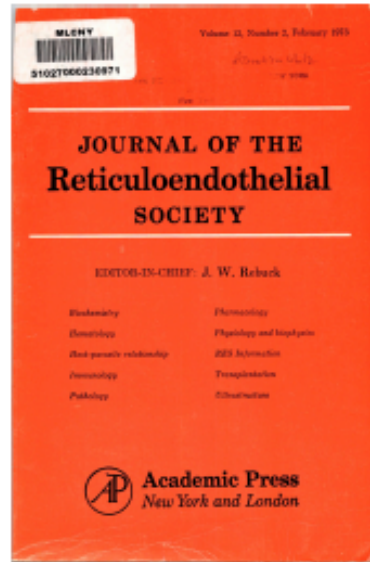
# History of the Society

- Founded in 1955 as the Reticuloendothelial Society (RES)
- First annual meeting in 1964
- Reborn as the Society for Leukocyte Biology (SLB) in 1984
- Currently 1,100 members
- Executive Director – Jen Holland – since 2011
- Leadership: President, President-Elect and Past President, Secretary, Treasurer, 8 Councilors, 1 Associate Councilor



# Journal

- 1964 - *Journal of the Reticuloendothelial Society* (JRES)
- 1984 – JRES becomes the *Journal of Leukocyte Biology* (JLB)
  - 1992 JLB leaves Wiley for FASEB – publishing and management services
  - 2017 JLB returns to Wiley



**JLB** JOURNAL OF  
LEUKOCYTE  
BIOLOGY

# Annual Meeting and Awards

- Meetings held annually, usually in October
- **Legacy Award** – highest award - recognizes lifetime achievement
- **Jeanette Thorbecke Award** – early career female scientist
- **Dolph Adams Award** - early-mid career discoveries in the area of cellular and molecular mechanisms of host defense and inflammation.
- **Presidential Awards** – graduate student and postdoc/junior faculty levels
- **Travel Awards**
- **Lifetime membership**

# Committees, Programs and Opportunities

- 2014 – Members in Transition and Training Group (MTTG)
- 2017 – Poster flash talks
- 2018 – Special Interest Group Satellites
- 2020 -- SLB SCHOOL – Symposium for Career Development and Hands-On Oppportunity to Learn – full day workshop
- SLB Ambassadors and Trainee Awards
- Standing committees: Publications, Professional Development, DEI, Membership, Communications, Nominations, Meetings/fundraising

# iSLB Newsletter – first digital edition in 2009



2020 Video Abstract Spotlight Winners

See all of the 2020 video abstract submissions...

iSLB SOCIETY FOR LEUKOCYTE BIOLOGY

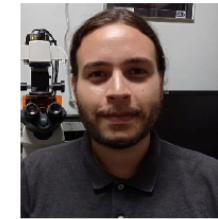
Fall 2020 Vol 3

## 2020 Speaker Interview: Dr. Gabriel Rabinovich

By: Stephanie Silva-Del Toro

## Behind the Science Interviews with JLB Authors

Alan Hsu and Albert Sek



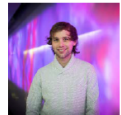
Matheus Mattos, PhD student in the lab of Gustavo Menezes, Instituto de Ciências Biológicas, Department of Morphology, Universidade Federal de Minas Gerais, Brazil

Prolonged neutrophil survival at necrotic sites is a fundamental feature for tissue recovery and resolution of hepatic inflammation (<https://doi.org/10.1002/JLB.1MA0420-634R>)

## Navigating a Research Career in 2020

Caitlin Gillis, Georgios Karagiannis & Katherine Martin

The MTTG connected with early-career researchers across the world to find out how they have experienced the COVID-19 pandemic, and its associated personal and professional challenges.



**Daniel Simpson** PhD Student | Walter and Eliza Hall Institute, Melbourne, Australia  
*Inspired by a senior lecturer, I started as a TNF-signaling enthusiast and now I am studying the role of unique regulators of cell death signaling in the context of innate immunity.*

**Serena Lucotti** Postdoctoral fellow | Weill Cornell Medical College, New York City, USA  
*An enthusiastic cancer researcher with a strong interest in metastatic disease. My research focuses on the interplay between tumor cells & the coagulation system during metastatic dissemination.*



**Jon Iker Etchegaray** Postdoctoral fellow | University of Virginia, Charlottesville, USA  
*Our lab works on understanding the process of efferocytosis (phagocytosis of apoptotic cells) and its role in development, homeostasis, and disease.*

**Charlotte Scott** Principal Investigator & U.Ghent Professor | VIB Center for Inflammation Research Ghent, Belgium

*I am a newly appointed PI: I established my independent lab in October 2019, supported by an ERC starting grant. We focus on unravelling the heterogeneity and function within myeloid cells, specifically in the liver and intestine, & in the context of tissue damage and inflammation.*



## Read this interview in Spanish...



*Gabriel Rabinovich is the Director of the Laboratory of Immunopathology, Institute of Biology and Experimental Medicine, CONICET and Professor of Immunology at the University of Buenos Aires. For more than 25 years he has investigated the role of glycans and glycan-binding proteins in mediating cellular processes central to immune regulation and human diseases.*

## From the President...

By Nick Lukacs



Nick Lukacs, SLB President

# Society Highlights:

- ▶ 1000+ members
- ▶ Leadership opportunities for members at all career levels
- ▶ Focus on early career investigators
- ▶ Extensive and generous merit award program
- ▶ Support to attend the annual meeting with presentation opportunities
- ▶ Opportunities to speak at associated meetings in SLB hosted sessions
- ▶ Opportunities to host your own Special Interest Group Satellite
- ▶ Global Science focus with targeted sessions
- ▶ Mentoring programs
- ▶ Publish in well respected Journal of Leukocyte Biology
- ▶ Opportunities to lead Journal topical issues and meeting focus issues
- ▶ Global reach with discounts in recognition of United Nations defined HDI
- ▶ Welcoming community of diverse researchers and clinicians around the globe
- ▶ Unique small community feel with personal networking opportunities in a society with solid resources

